

# INTRODUCTION

## AW VideoCompositor For LivePremier™

V2.3.0

*Developed by*



**ANALOG WAY®**  
*Pioneer in Analog, Leader in Digital*

## Description

**AW VideoCompositor for LivePremier™** allows developers to control with minimal programming the advanced features of any LivePremier™ presentation system and build innovative solutions using a single Crestron® touchscreen.

**AW VideoCompositor for LivePremier™** provides outstanding functionalities including visualization in real time of the whole scene with layer positions, display of sources snapshots refreshed automatically, layer source management through drag and drop, capability to change position and size of a layer with the flick of a finger, multiviewer mosaic configuration, etc.

## Package content

The package contains the following components:

- The Smart Graphics™ module. It can be installed easily via the Windows setup application provided: **AW\_SmartGraphicsPackage\_5.1.0\_setup.exe**
- The modular Crestron driver for the LivePremier™ series
- A SIMPL+® example program that demonstrates the features supported by the driver
- A XPanel project running with the SIMPL+® sample program provided
- Help files in English

## Key features

- Visualize your screens/aux with layers size and position (PRG or PRW)
- **Manage multiple screens and/or auxiliary outputs using only one source list**
- Use the touchscreen to resize or adjust layer position
- Visualize live sources with their dynamic thumbnail
- 2 modes for source selection: drag & drop or select & click
- Control built-in timers
- Recall Screen Presets, Master Presets or Layer Presets and start seamless transitions
- Change screen background instantly
- Configure the multiviewer outputs mosaic with a simple flick of the finger
- Route de-embedded audio channels or Dante input audio channels to your video outputs
- The Video Compositing Smart Graphics™ module can be customized to match the look and feel of your application
- The Video Compositing Smart Graphics™ module can be configured to match your exact screens configuration (pixel canvas, layers, ...)
- Compatible with 3-Series and 4-Series Crestron® control systems with Ethernet connection
- Compatible with any LivePremier™ live presentation switcher (Aquila RS alpha, Aquila RS1, Aquila RS2, Aquila RS3, Aquila RS4, Aquila C and Aquila C+)
- ...

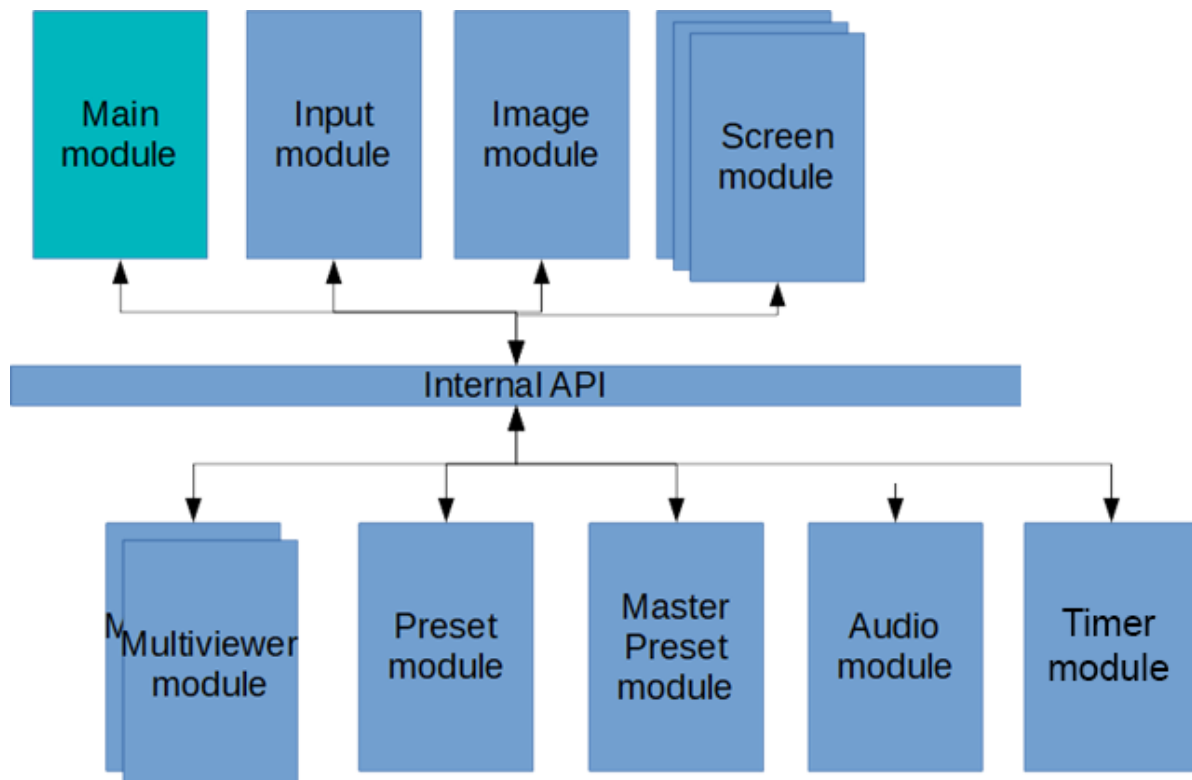
## Requirements

- Any Analog Way LivePremier™ live presentation switcher or the LivePremier™ Simulator
  - A 3-series or 4-series Crestron processor with Ethernet connection
  - A Smart Graphics™ compliant panel such as TSX Series (TSW, TST, ...), TSD2020, TPMC-V Series (V12, V15, V24), DGE-1, DGE-2, Smart Graphics™ XPanel and Web XPanel, windows surface pro (windows 8.1 with adobe air 3.5). Apple iPad, Apple iPhone and Android are not supported yet
- Note:** Due to limited performances, TSX panels are not recommended to handle a large number of layers, especially if dynamic snapshots are required in the user interface.

## Recommended software versions

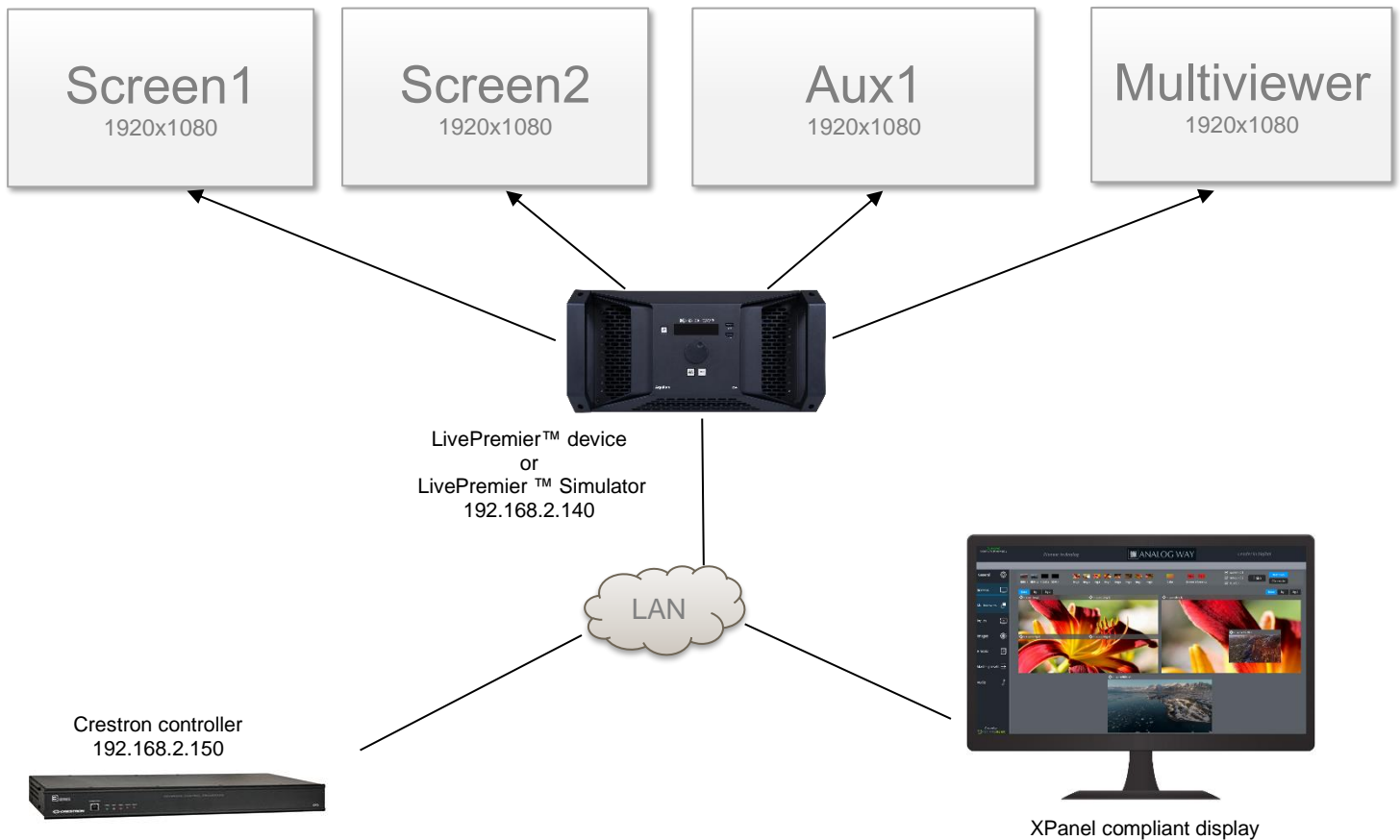
Software	Versions
LivePremier™ firmware	2.00.231 or above
LivePremier™ Simulator	1.2.7 or above
SIMPL Windows	4.11.06 or above
VTPro-e	6.2.00.03 or above
Smart Graphics™	2.15.04.00 or above
Device database	200.05.001.00 or above
Crestron database	201.00.004.00 or above
Simlp+ cross compiler	1.3 or above

## Driver Modularity



## Demo application: configuration and settings

The example provided within the package has been designed to control a LivePremier™ live presentation switcher with two 1080p Program screens (Screen 1 and Screen 2), one 1080p Auxiliary output (Aux 1) and one 1080p Multiviewer (out #1). Before running this example, please make sure your configuration (as well as the IP addresses) matches the diagram below:



The example also uses few screen presets and master presets that should be created with the Web RCS before running it:

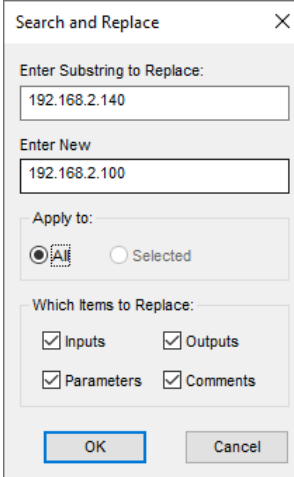
- 10 presets common to both screens and auxiliary outputs
- Screen 1 and Screen 2 contain 4 layers
- Aux 1 contains 2 layers and can be used to display inputs, images or screen programs (scaled)
- Multiviewer 1 is used to preview sources, images, or screens program (10 widgets can be controlled by the demo application)

Of course, you can reuse this example as much as necessary to implement your own solution.

## Customize the IP address of the LivePremier™ device

Before running the demo program to control your own LivePremier™ live presentation switcher or your LivePremier™ Simulator, it is important to customize some settings regarding the LivePremier™ device that will be controlled:

- Open the LivePremier™ SIMPL demo program (*LivePremierCrestron\_VC\_Demo.smw*). There are two versions of the demo program available, one for the 3-series and one for the 4-series Crestron processors. Select the one that matches the type of controller you intend to use.
- If the program will control a real LivePremier™ device, then select the *S-1: Init* folder and press F9 to replace the default IP address (192.168.2.140) with your LivePremier™ device IP address (ex. 192.168.2.100):



Search and Replace

Enter Substring to Replace:  
192.168.2.140

Enter New  
192.168.2.100

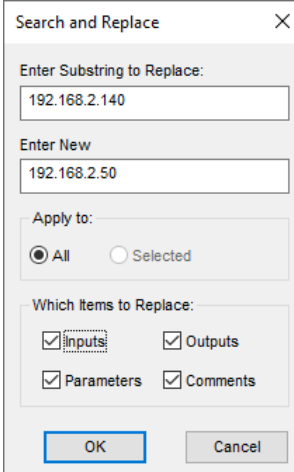
Apply to:  
 All  Selected

Which Items to Replace:  
 Inputs  Outputs  
 Parameters  Comments

OK Cancel

Then go to end of the first module *S-1.1 : Multiple Serial Send* and modify the default LivePremier™ MAC address with the one from your LivePremier™ device (for ex. 80:1F:12:40:59:CE).

- On the contrary, if you plan to control the LivePremier™ Simulator instead of a real LivePremier™ device, then select the *S-1: Init* folder and press F9 to replace the default IP address (192.168.2.140) with the IP address of the computer running the LivePremier™ Simulator (for ex. 192.168.2.50):



Search and Replace

Enter Substring to Replace:  
192.168.2.140

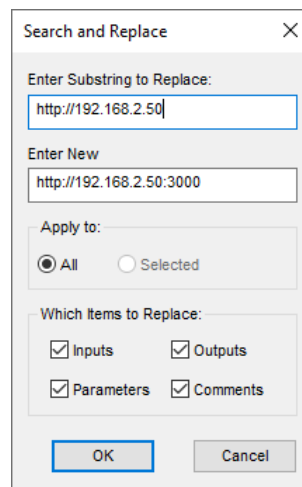
Enter New  
192.168.2.50

Apply to:  
 All  Selected

Which Items to Replace:  
 Inputs  Outputs  
 Parameters  Comments

OK Cancel

Press F9 again to replace the default LivePremier™ device access URL (<http://192.168.2.140>) by the LivePremier™ Simulator access URL available on TCP port 3000 (for example <http://192.168.2.50:3000>):



Then go to end of the first module *S-1.1 : Multiple Serial Send* and modify the default LivePremier™ MAC address by the one from the LivePremier Simulator (always 11-22-33-44-55-66).

- If the Web RCS has been configured to be reached only via the HTTPS secured protocol, you will need to replace all the HTTP URL to HTTPS URL.
- Recompile and upload the program on a Crestron controller.

Do not forget to update the connection parameters when launching the demo Xpanel to access your Crestron controller. By default, the Xpanel application will try to connect on 192.168.2.150.

## License

Before using **AW VideoCompositor for LivePremier™** you need to purchase a license. For pricing information, please contact your Analog Way sales representative or reseller. The license key can be entered on the main page of the XPanel example main page (but will be lost after a reboot of the controller) or preferably directly in the Crestron driver (parameter of the LivePremier\_Main\_VC module). If you are only using the LivePremier™ Simulator to test your program, then you can use the license **EA0F-07DD-70CA-7DDE-A9F3**.

## Authentication

When authentication is enabled in WebRCS, it is necessary to add the new password in each **AW VideoCompositor** in the VTPro-e project, so as to be able to retrieve snapshots and images.

The image shows a configuration tree with the following structure:

- Window properties
- Security properties
  - Password** myWebrcsPwd
- Sources properties
- Number of display 3
- Display 1

V2.3.0 - November 2021

**Connect with us on**

