

QUICK START GUIDE - For LiveCore™ series

Control Box² - Ref. SB124T-2



ANALOG WAY®
Pioneer in Analog, Leader in Digital

WHAT'S IN THE BOX

- 1 x SB124T-2 Control Box²
- 1 x Carrying case
- 1 x USB stick containing both the Windows and MAC OS setup applications*
- 1 x Quick start guide*

* The quick start guide and the setup applications are also available on www.analogway.com



Go to our website to register your product(s) and be notified about new firmware updates:
<http://bit.ly/AW-Register>

SYSTEM REQUIREMENTS AND LIMITATIONS



Windows: Microsoft® Windows® 7 or above, 50 MB of available hard-disk space for installation. LAN connection



Mac OS: Mac OS v10.7 or above, 50 MB of available hard-disk space for installation. LAN connection

LiveCore™ firmware versions prior to version 3.02.33 are not supported.

QUICK INSTALL AND SETUP

• Installing AW Box Controller on Windows

Plug the USB stick provided with the package then locate the **AW Box Controller** installer for Windows (the file name is **SetupAWBoxController_<version>.exe**). You can also download the latest updates from the product download area on www.analogway.com. Double-clicking this file will launch the installer that will install **AW Box Controller** on your system.

• Installing AW Box Controller on Mac OS

Plug the USB stick provided with the package then locate the **AW Box Controller** installer for Mac OS (the file name is **SetupAWBoxController_<version>.pkg**). You can also download the latest updates from the product download area on www.analogway.com. Double-clicking this file will launch the installer that will install **AW Box Controller** on your system.

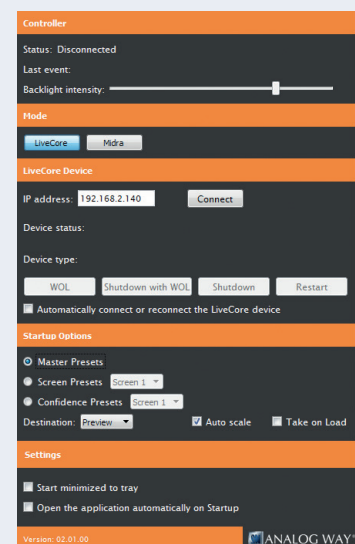
• Configuring AW Box Controller

Plug your **Control Box²** into the USB port and wait for your system to recognize it. When you plug a **Control Box²** device into a Mac for the first time, the Keyboard Setup Assistant will launch automatically. Close this assistant to continue. When ready, start the **AW Box Controller** application:

The application will try to detect and connect the **Control Box²** (SB124T-2). It may take a few seconds for the application to succeed. In case of failure, **AW Box Controller** indicates an error and will attempt to reestablish a new connection with the device once every 3 seconds. When detected, the application indicates the type of controller connected and let you adjust the LED backlight intensity.

Click **LiveCore™** then enter the IP address of the **Analog Way LiveCore™ Switcher** you want to connect.

If you intend to use the controller for recalling Master Presets, make sure to select the option **Master Presets**. If you intend to use the controller for recalling Screen Presets, make sure to select the option **Screen Presets** and then choose the corresponding screen index (from 1 to 8 depending on your configuration). However, if you intend to use the controller for recalling Confidence Presets, make sure to select the option **Confidence Presets** and then choose the corresponding Confidence screen index (from 1 to 8 depending on your configuration).



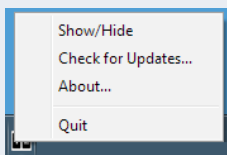
Select the destination (**Preview** or **Program**). If the **Preview** destination has been selected then you can also enable the **Take on Load** option that will automatically transition the Preview content to the Program once a Screen Preset or a Master Preset has been recalled from memory.

If you would like to disable the 'Auto Scale' feature of the **LiveCore™ switcher**, make sure to uncheck the box **Auto Scale**. If you would like for **AW Box Controller** to connect automatically the **LiveCore™ Switcher** each time the application starts or when it gets disconnected, you can check the box **Automatically connect or reconnect the LiveCore™ device**.

When ready, click **Connect** to attempt a connection to the remote host. If the connection is successful, the application displays **Connected and ready** as well as the type of **LiveCore™ Switcher** detected. The green LED indicator in the upper-left corner is enabled. In case of failure, **AW Box Controller** displays an error message and the LED indicator in the top-left corner blinks red.

If you would like for **AW Box Controller** to start each time your system starts, you can check the box **Open the application automatically on Startup**.

If you would like for **AW Box Controller** to start minimized to tray, you can check the box **Start minimized to tray**.



If you need to reboot (turn off and turn back on) the **LiveCore™ Switcher** remotely, simply click **Restart**. If you want to turn it off, choose **Shutdown**. In this case the **LiveCore™ Switcher** will have to be restarted manually. If you would like for the **LiveCore™ Switcher** to shutdown with Wake-On-Lan feature enabled, click **Shutdown with WOL**. In this mode, you will be able to power up the **LiveCore™ Switcher** from your network remotely by clicking the **WOL** button.

To terminate the program, choose **Quit** in the context menu of the system tray entry.

USING YOUR CONTROL BOX²

Switching from one page of presets to the other

- To switch from one page of presets to the other (and vice versa), simply press the **PAGE** key on the **Control Box²** device. Blue backlighting indicates page 1. Red backlighting indicates page 2.

Loading Master Presets from memory

- Press the **Master Preset** key
- Press the **Program/Preview** key to select the Program or Preview destination
- Press key **1-140** to load the Master Preset from the corresponding memory index into the selected destination. If the selected destination is Preview, the key backlight starts blinking. If this preset has been selected on Program, the key illuminates in contrasting color. Note that **Screen #1 - #8** keys LED backlights automatically reflect the destination screen indexes for the selected Master Preset

Loading Screen Presets from memory

- Press the **Screen Preset** key
- Press the **Program/Preview** key to select the Program or Preview destination
- Press the **Screen #1 - #8** key(s) to select the screen(s) where the preset will be recalled
- Press key **1-140** to load the Screen Preset from the corresponding memory index into the selected destination of the selected screen(s). If the selected destination is Preview, the key backlight starts blinking. If this preset has been selected on Program, the key illuminates in contrasting color

Loading Confidence Presets from memory

- Press the **Confidence Preset** key
- Press the **Screen #1 - #8** key(s) to select the destination Confidence screen(s)
- Press key **1-16** to load the Confidence Preset from the corresponding memory index to the selected confidence screen(s). The key illuminates in contrasting color

Loading Monitoring Presets from memory

- Press the **Monitoring Preset** key
- Press the **Mon #1 - #2** key(s) to select the destination
- Press key **1-8** to load the Monitoring Preset from the corresponding memory index to the selected Monitoring output(s). The key illuminates in contrasting color

Freezing/Unfreezing Inputs

- Press the **Freeze** key
- Press key **1-24** to freeze the corresponding input. The key illuminates in contrasting color. Press the same key to unfreeze the input

Changing a Native Background

- Press the **Native Layer Set** key
 - Press the **Program/Preview** key to select the Program or Preview destination
 - Press the **Screen #1 - #8** key(s) to select the destination screen(s)
 - Press key **1-8** to select the corresponding Native Layer Set index. The key illuminates in contrasting color
- or
- Press the **None** key to clear the Native background of the select screen(s) content

Changing the source displayed in a layer

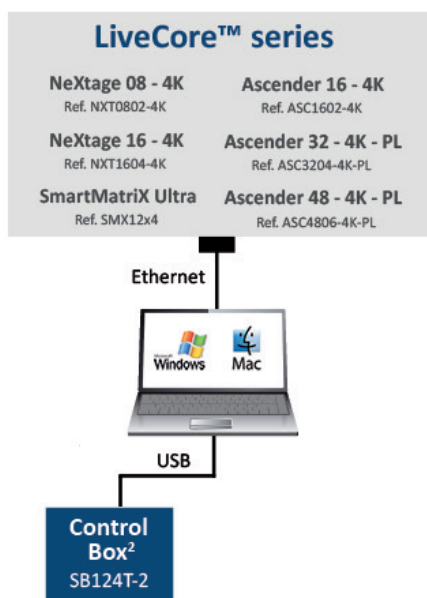
- Press the **Program/Preview** key to select the destination
 - Press the **Screen #1 - #8** key(s) to select the screen(s) for which you want to change the layer(s)
 - Press the **Layer Select** key
 - Press key(s) **1-24** to select one or more layers
 - Press the **None** key to clear the selected layer(s) content
- or
- Press the **Color** key to display the default color in the selected layer(s)
- or
- Press the **Live Input** key. Press key **1-24** to display the corresponding live source in the selected layer(s)

Transitioning the Preview content to the Program

- Press the **TAKE** key for an automatic timed transition
- or
- Press the **T-BAR** key then use the T-bar for a manual smooth transition
- or
- Press the **CUT** key to take your Preview to Program but without all the programmed effects. They will be all replaced by the cut effect.

The Master Preset or Screen Preset key illuminates in contrasting color after the **TAKE** to indicate that this preset has been selected on program.

DIAGRAM



WARNING!

Connect the **Control Box²** USB cable directly to your computer - Do not connect the **Control Box²** USB cable on the front of your LiveCore™ series device.

TROUBLESHOOTING AW BOX CONTROLLER

Should you encounter difficulty with **AW Box Controller** application, you may contact our technical support department at tech-support@analogway.com.

Please attach the application log file to your email.

This log file can be found here:

For Windows® 7 or above:

C:\Users\[user]\AppData\Local\AWBoxController\AWBoxController_Log.txt

Note: If you can't locate the log file, the AppData folder may not be visible. To make this folder visible, check the **Folder Options** settings for the [User] folder. Click **Organize**, and then click **Folder and search options**. Click the **View** tab. Make sure that **Show hidden files, folders, and drives** is selected.

For Mac OS:

/Users/[user]/Library/Application Support/AWBoxController/AWBoxController_Log.txt

Note: If you can't locate the log file, your Library folder may be hidden. Open **Finder**. To make your Library folder visible, press and hold the "option" key while you click the **Go** menu. The **Library** folder displays. Still holding down the "option" key, click **Library** to display the contents of the Library folder.

WARRANTY CONDITIONS

This product has a 1 year warranty on parts and labor, back to factory. This warranty does not include faults resulting from user negligence, special modifications, electrical surges, abuse (drop/crush), and/or other unusual damage. In the unlikely event of a malfunction, please contact your local Analog Way office for service.