

# INTRODUCTION

## Crestron® driver for Midra™ 4K series

V1.1.0

*Developed by*

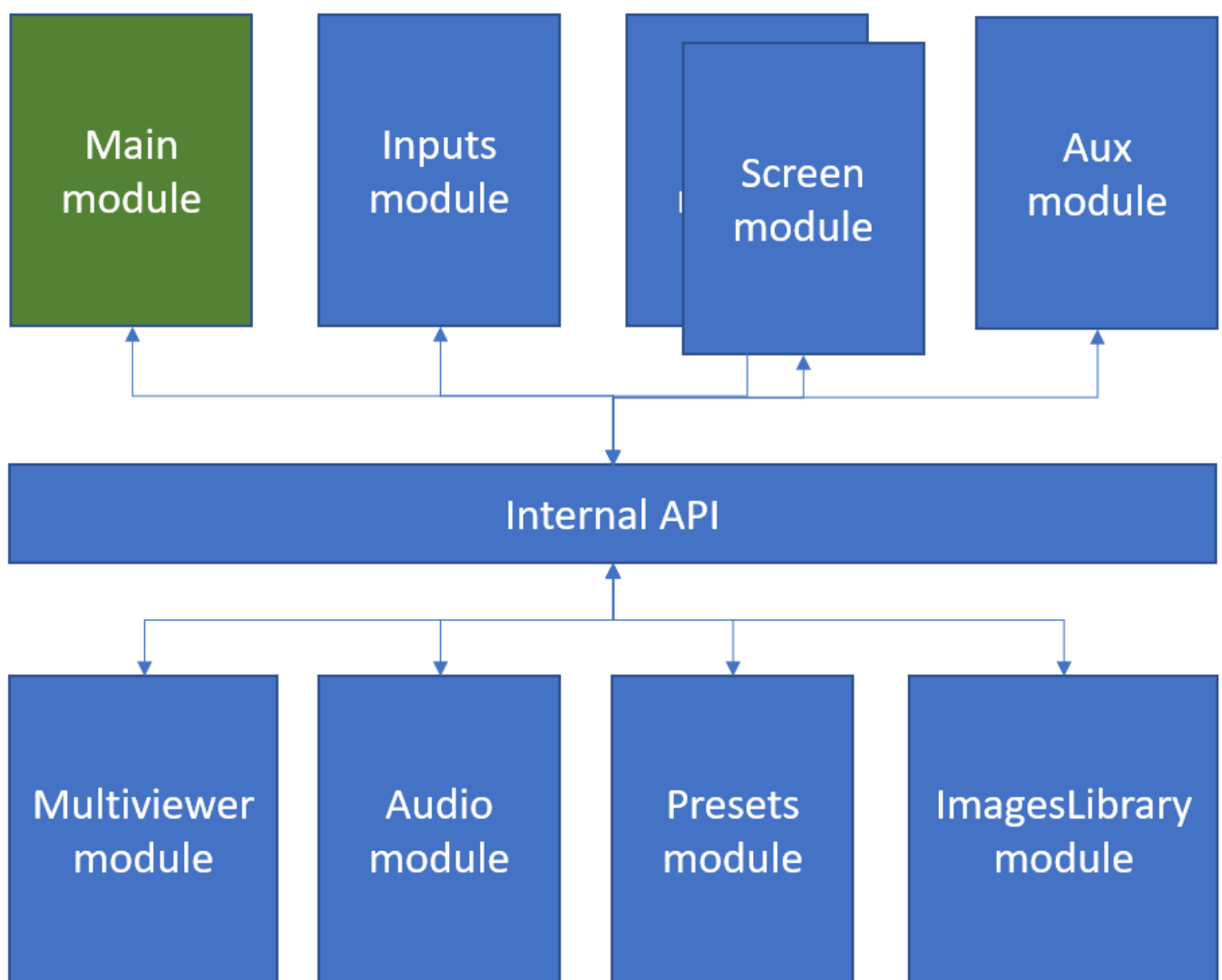


**ANALOG WAY®**  
*Pioneer in Analog, Leader in Digital*

## Description

The **Crestron driver for the Midra™ 4K** series allows developers to remotely control the standard features of a Midra™ 4K live presentation switcher from any Crestron 3-Series or Crestron 4-Series control system. The driver provides several functional modules (**Main** module is required; the others are optional) that can be combined according to your needs. You can load the example provided to see how they are structured/built.

## Driver Modularity



## Package content

The package contains the following components:

- The modular Crestron driver for the Midra™ 4K series (for 3-series Crestron processors)
- The modular Crestron driver for the Midra™ 4K series (for 4-series Crestron processors)
- A SIMPL+® example program that demonstrates the different features supported by the driver
- A XPanel project running with the SIMPL+® sample program provided
- Help files in English

## Key features

- Recall Screen memories, AUX memories, Master memories or Multiviewer memories
- Display live sources with dynamic snapshots and properties
- Change the background set of a Screen
- Change the source displayed in a layer of a Screen
- Change the still image displayed in the foreground layer of a Screen
- Change the source displayed by the Auxiliary output
- Transition (TAKE) the Preview content to the Program (Screen and AUX)
- Configure multiviewer output(s) widget sources
- Route de-embedded audio channels or Dante input audio channels to the video outputs or to the Dante output audio channels
- Control device (reboot, shutdown or wakeup)

## Requirements

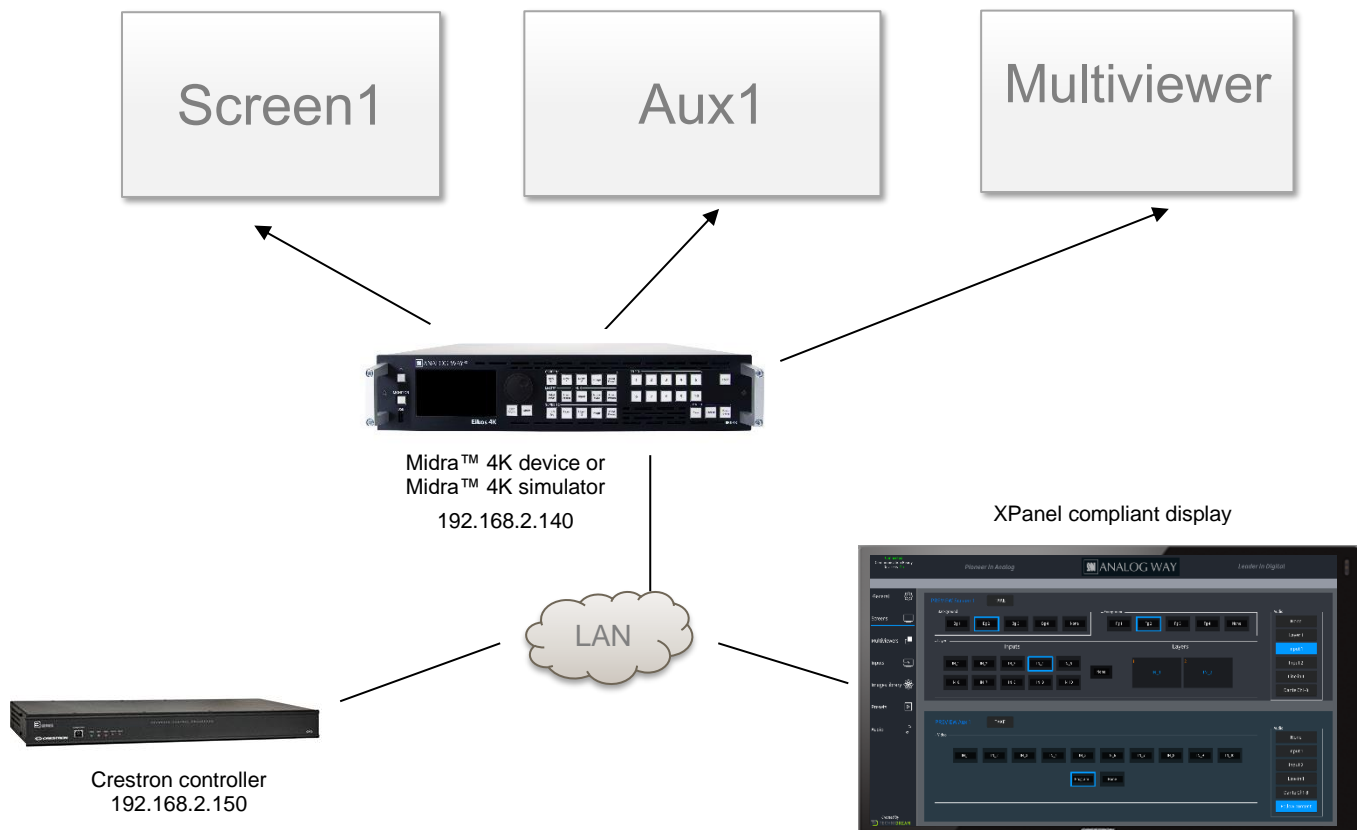
- Any Analog Way Midra™ 4K live presentation switcher (Eikos 4K, Pulse 4K, QuickMatrix 4K and QuickVu 4K) or the Midra™ 4K Simulator
- A 3-series or 4-series Crestron processor with Ethernet connection
- Any Crestron XPanel compliant display

## Recommended software versions

Software	Versions
Midra™ 4K firmware	1.2.7 or above
Midra™ 4K Simulator	1.0.7 or above
SIMPL Windows	4.14.31 or above
VTPro-e	6.2.02.08 or above
Smart Graphics™	2.17.01.01 or above
Device database	200.50.001.00 or above
Crestron database	203.05.001.00 or above
Simlp+ cross compiler	1.3 or above

## Configuration and settings for running the 'advanced' example

The example provided within the package has been designed to control a Midra™ 4K live presentation switcher configured as “Mixer”, i.e. one Screen, one Auxiliary output and one Multiviewer. Before running this sample, please make sure your configuration (as well as the IP addresses) matches the diagram below:



The example also can use up to 10 Screen memories, AUX memories, Master memories and Multiviewer memories that should be created with the Web RCS before running it.

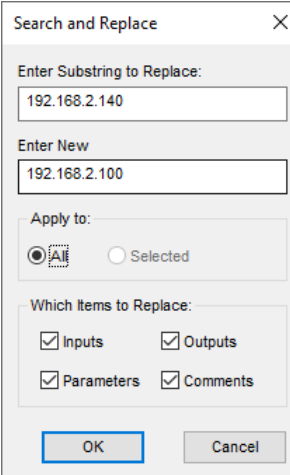
- Screen 1 contain 2 layers
- Aux 1 can be used to display screen 1 program or any of the 10 inputs (scaled)
- Multiviewer is used to preview sources or screen 1 (PGM and PRW). 10 widgets can be controlled by the demo application

Of course, you can reuse this example as much as necessary to implement your own solution.

## Customize the IP address of the Midra™ 4K device

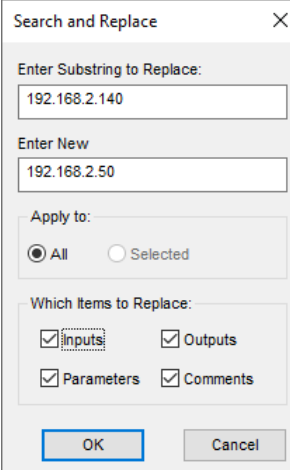
Before running the demo program to control your own Midra™ 4K live presentation switcher or your Midra™ 4K Simulator, it is important to customize some settings regarding the Midra™ 4K device that will be controlled:

- Open the Midra™ 4K SIMPL demo program ([MidraCrestronDemo.smw](#)). There are two versions of the demo program available, one for the 3-series and one for the 4-series Crestron processors. Select the one that matches the type of controller you intend to use.
- If the program will control a real Midra™ 4K device, then select the *S-1: Init* folder and press F9 to replace the default IP address (192.168.2.140) with your Midra™ 4K device IP address (ex. 192.168.2.100):

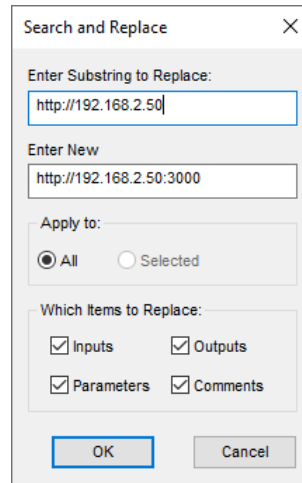


Then go to end of the first module *S-1.1 : Multiple Serial Send* and modify the default Midra™ 4K **MAC address** with the one from your Midra 4K device (for ex. 80:1F:12:40:59:CE).

- On the contrary, if you plan to control the Midra™ 4K Simulator instead of a real Midra™ 4K device, then select the *S-1: Init* folder and press F9 to replace the default IP address (192.168.2.140) with the IP address of the computer running the Midra 4K Simulator (for ex. 192.168.2.50):



Press F9 again to replace the default Midra™ 4K device access URL (<http://192.168.2.140>) by the Midra™ 4K Simulator access URL available on TCP port 3000 (for example <http://192.168.2.50:3000>):



Then go to end of the first module *S-1.1 : Multiple Serial Send* and modify the default Midra™ 4K MAC address by the one from the Midra 4K Simulator (always 11-22-33-44-55-66).

- Recompile and upload the program on a Crestron controller.

Do not forget to update the connection parameters when launching the demo Xpanel to access your Crestron controller. By default, the Xpanel application will try to connect on 192.168.2.150.

June 2021 - v1.1.0

Connect with us on

